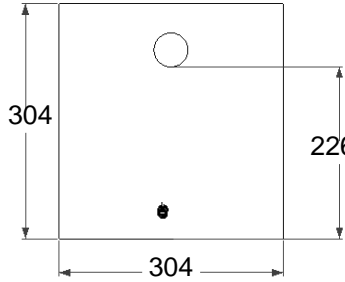
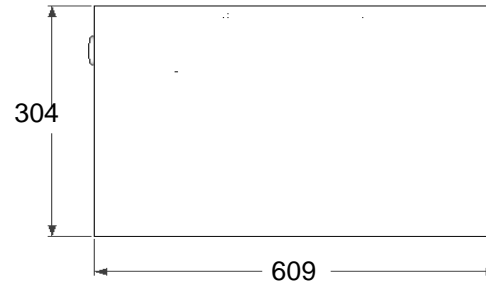


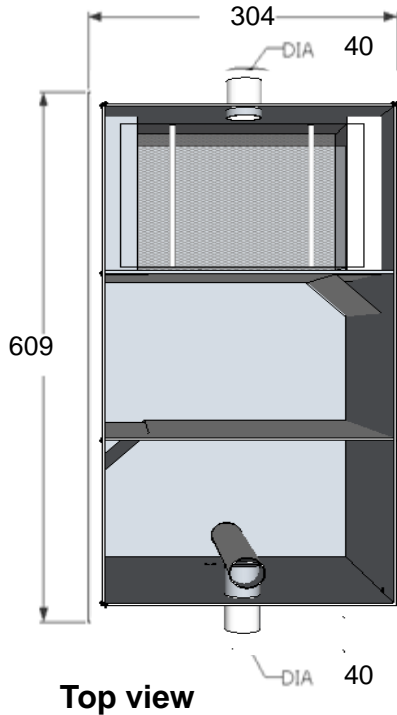
Front view - Inlet



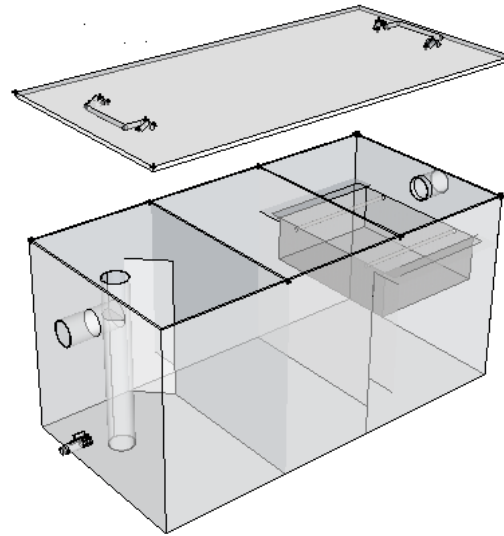
Back view - outlet



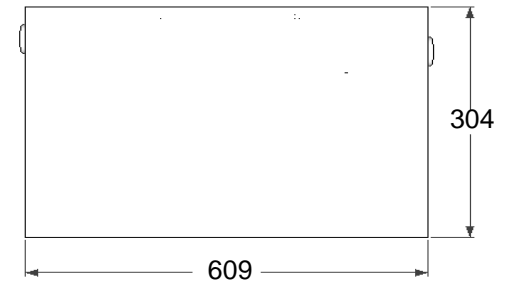
Left view



Top view



ISO view



Right view

Specifications

Model: **GTA01S**
 Material: Stainless Steel 304
 Thickness: 0.8 mm
 Inlet pipe size: 1 ½ inch length 3"
 Outlet pipe size: 1 ½ inch length 3"
 Flow rate: 15 GPM
 Capacity: 57 Liter

SIRIM: YES
 Patent: YES
 Trade Mark: EJAU
 Warranty: 5 Years
 Ready Stock: YES
 Delivery: Between 3 days
 Own Factory: YES, In Selangor

* In keeping with our policy of updating products we reserve the right to make improvements or changes.

KUALITI ALAM HIJAU (M) SDN BHD

DRAWING FOR :

DRAWING DESCRIPTION :
 Material : Stainless Steel 304 Non Rusted

DATE : 30/4/2014

NOTE :
 All dimension in MM unless otherwise specified

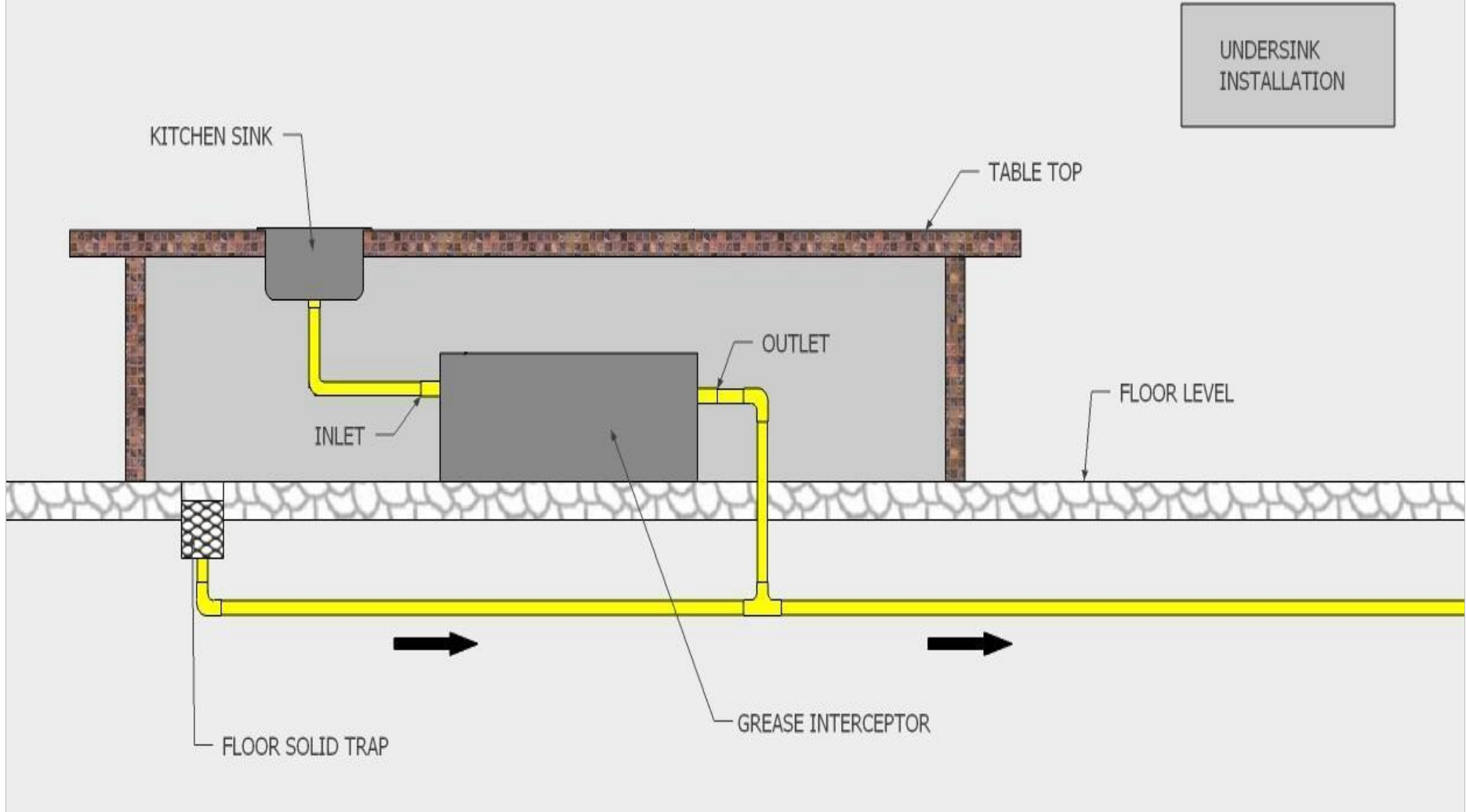
Drawn by : Liza

Checked by : Jackson

Approved by : Marizan

GREASE INTERCEPTOR INSTALLATION GUIDE

UNDERSINK
INSTALLATION



KUALITI ALAM HIJAU (M) SDN BHD

DRAWING FOR :

DRAWING DESCRIPTION :
Material : Stainless Steel 304 Non Rusted

DATE : 30/4/2014

NOTE :
All dimension in MM unless
otherwise specified

Drawn by : Syahrul

Checked by : Jackson Wong

Approved by : TAN

Installation Guide

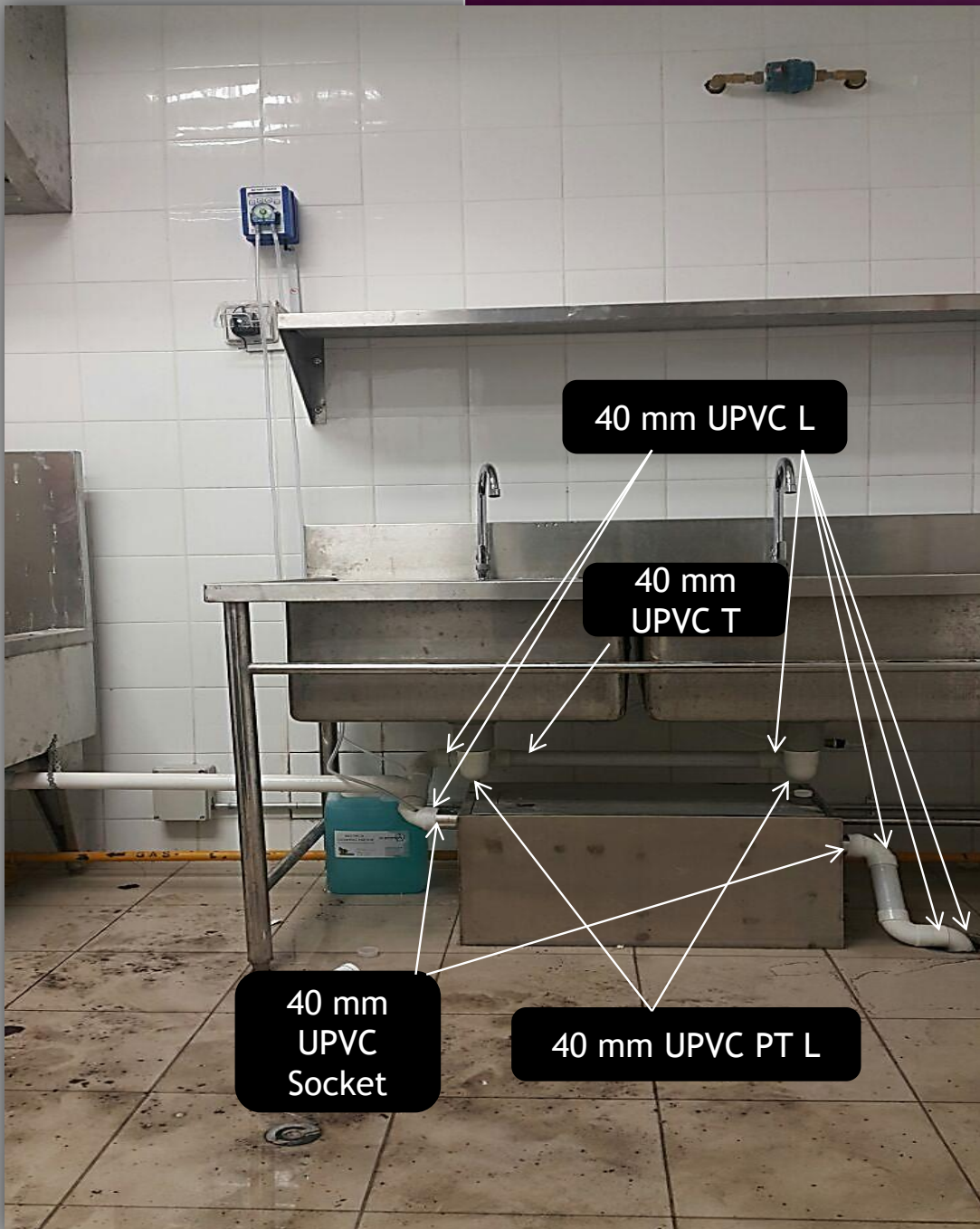
GTA01S, GTA02S GREASE TRAP

Basic Installation Item:

1. 40 mm UPVC L x 6 unit
2. 40 mm UPVC PT L x 2 unit
3. 40 mm UPVC T x 1 unit
4. 40 mm UPVC Socket x 2 unit
5. 40 mm UPVC Pipe 2 meter
6. White Tape small x 2 rol

Other item:

- a) PVC Gam
- b) Saw for cutting PVC



Use
40 mm
Socket



To Join
Inlet
and
Outlet

